




hamlyn
smith.

Queens Gardens, Hove, BN3 2LP

£600,000 - £650,000

hamlyn smith.

 2 Bedrooms

 1 Reception

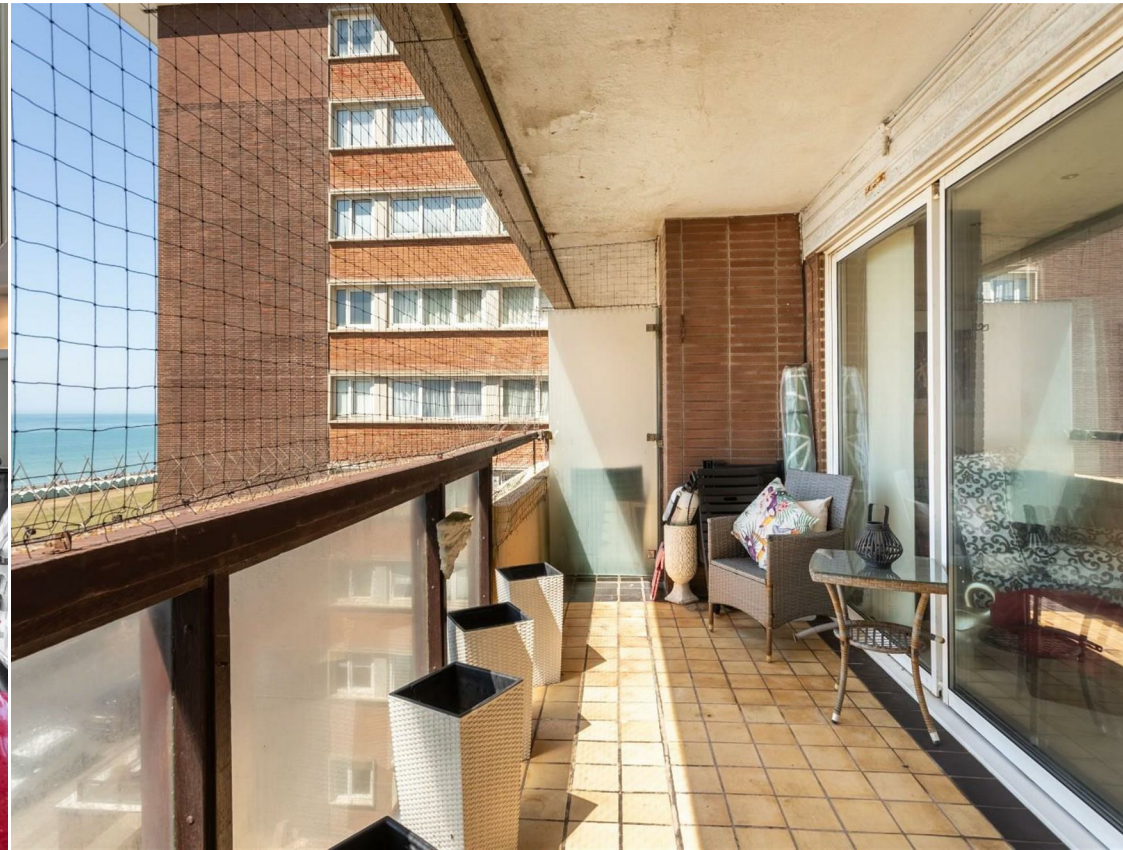
 2 Bathrooms

Guide Price £600,000 - £650,000

Welcome to this rarely available, generously proportioned two/three-bedroom apartment, ideally situated with direct sea views on the 4th floor of the prestigious Kingsway Court.

- Stunning 2/3 Bedroom apartment
- Uninterrupted sea views
- Large south facing balcony
- Secure block with Concierge Service
- HEATING AND HOT WATER included in the service charge
- Lift access





hamlyn smith.

📍 50 Goldstone Villas, Hove, BN3 3RS

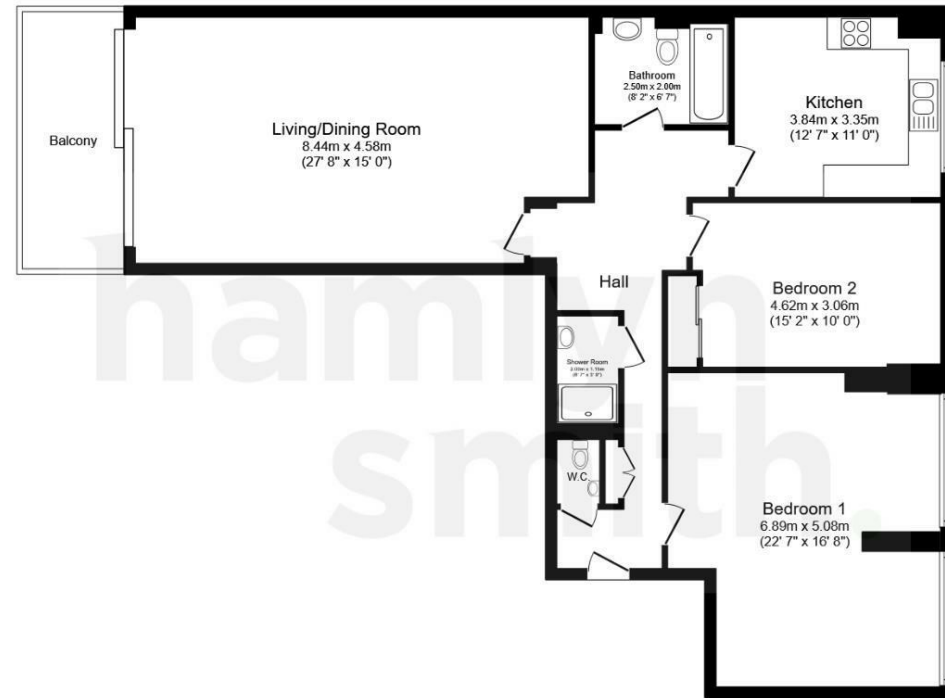
☎ 01273 762222

✉ hello@hamlynsmith.co.uk

Located in the prestigious Kingsway Court, Hove, this stunning south-facing apartment originally featured three bedrooms but has been thoughtfully reconfigured into a spacious two-bedroom layout, enhancing both comfort and style. The main bedroom, a luxurious retreat, combines two former double bedrooms to create a generously sized principal suite with a dedicated dressing area. The second bedroom is also sizeable, complete with built-in storage to maximize functionality.

The apartment boasts a well-designed kitchen, fitted with modern built-in appliances, offering both convenience and elegance for any cooking enthusiast. For added comfort, the property features a stylish bathroom, an additional WC, and a separate shower room.

The highlight of this beautiful home is undoubtedly the expansive living and dining area. This inviting space flows seamlessly onto a stunning south-facing balcony, where residents can enjoy breathtaking, direct views over Hove Lawns and the sparkling sea beyond. Perfectly positioned to capture the beauty of the coastline, this apartment offers a rare opportunity to experience the best of seaside living.



Floor Plan

Floor area 118.3 sq.m. (1,274 sq.ft.)

Total floor area: 118.3 sq.m. (1,274 sq.ft.)

This floor plan is for illustrative purposes only. It is not drawn to scale. Any measurements, floor areas (including any total floor area), openings and orientations are approximate. No details are guaranteed, they cannot be relied upon for any purpose and do not form any part of any agreement. No liability is taken for any error, omission or misstatement. A party must rely upon its own inspection(s). Powered by www.Propertybox.io

